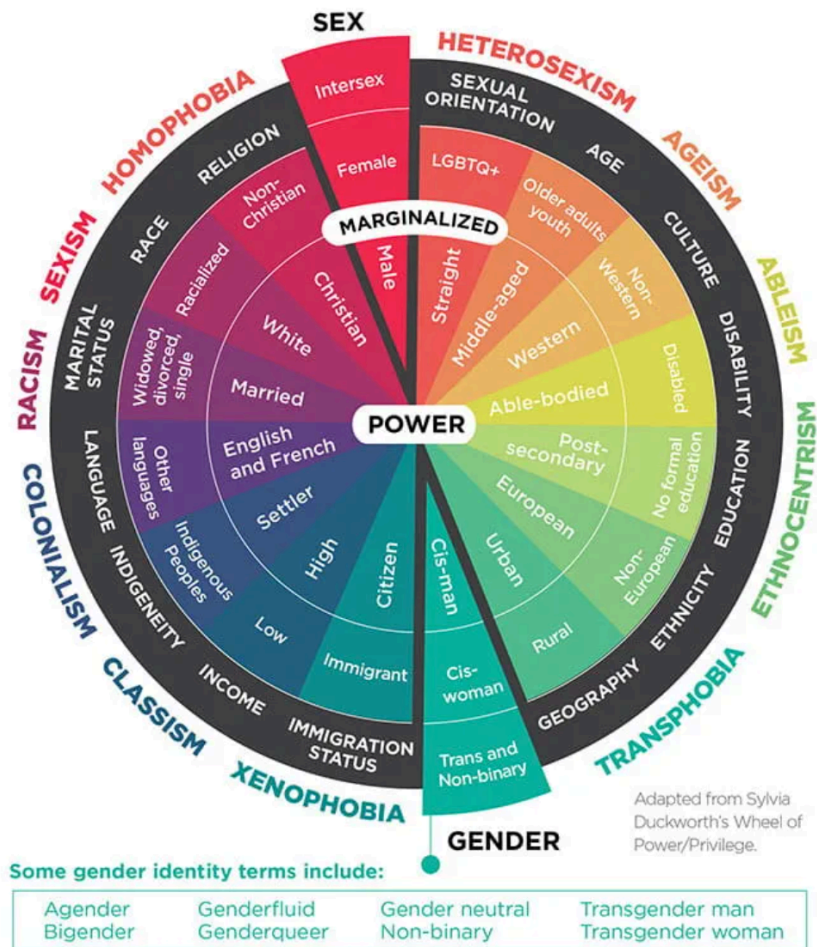


## Activity 5: Social Location

One of the first steps to equitable social media is identifying your social location. Our social location determines our access to power, privilege, or our lack of power and privilege; it is the expression of a person's existence in society and culture. Social location can allow us access to certain status or block us from having certain status. Social location is important because it acknowledges that all people in society don't think alike or experience reality in the same way. Online and off, social location places us in certain relationships to the world and the people around us.



Graph created by Sheridan College

1. Plot your social location by listing your identity markers as they are featured on the graph above. You can also circle them if it's easier.

- 
2. What did you notice about your social location? Write 2-3 sentences about what stood out most to you.